

Krystalvision 6 Series

Hand & Cabin X-Ray Baggage Scanners

Summary

Krystalvision offers 6 Series - x-ray baggage scanners that are designed for scanning cabin baggage and medium size baggage. 6 Series x ray scanners are most popular due to their small footprint, ability to blend into building entrance environment and scan large volumes efficiently. These are commonly installed in government buildings, corporate offices, transportation infrastructure etc.

Krystalvision 6 Series scanners utilize dual energy detectors, optimized x ray generator and advanced proprietary image processing algorithms to provide the user with best-in-class high resolution image quality and excellent threat detection capability. Customization is possible to suit to your specific requirements.

Key Features

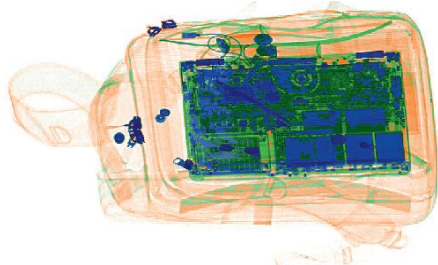
- High reliability and availability
- Advanced high resolution imaging
- Best-in-class threat detection capabilities
- Dual View and Virtual 3D models available
- Integrated Self-diagnostic reporting capability
- Meets all Government safety regulations
- Lower total cost of ownership (TCO)
- Excellent pre & post sales support
- Low bed model available



TECHNICAL SPECIFICATIONS

PHYSICAL SPECIFICATIONS

Model No.	KV6040 SV	KV6040 3D	KV6040 DV	KV6550	KV6550 3D	KV6550 DV
Tunnel Opening in MM	600(W) x 400(H)	600(W) x 400(H)	600(W) x 400(H)	650(W) x 500(H)	650(W) x 500(H)	650(W) x 500(H)
Overall Dimensions in MM	2020 (L) x 900 (W) x 1230 (H) Approx.	2020 (L) x 900 (W) x 1230 (H) Approx.	2020 (L) x 1200 (W) x 1330 (H) Approx.	2020 (L) x 950 (W) x 1330 (H) Approx.	2020 (L) x 950 (W) x 1330 mm(H) Approx.	2020 (L) x 1250 (W) x 1430 (H) Approx.
Conveyor Load Capacity	170 kg evenly distributed	170 kg evenly distributed	170 kg evenly distributed	170 kg evenly distributed	170 kg evenly distributed	170 kg evenly distributed
Conveyor/Belt Speed	0.18-0.3 m/s Bidirectional	0.18-0.3 m/s Bidirectional	0.18-0.3 m/s Bidirectional	0.18-0.3 m/s Bidirectional	0.18-0.3 m/s Bidirectional	0.18-0.3 m/s Bidirectional
Conveyor Height	750 mm Approx.	750 mm Approx.	750 mm Approx.	750 mm Approx.	750 mm Approx.	750 mm Approx.



Advanced Material Discrimination



Automatic Detection & Alerts

GENERAL SPECIFICATIONS

Steel Penetration	Standard: 37 mm, Typical: 39 mm
Wire Resolution	42 SWG Typical, 40 SWG Guaranteed
Power Requirements	230VAC: 160-280 VAC, 50Hz, 6 Amp
Display / Resolution / Sensitivity	22" or more High Resolution, Full HD LED Color Monitor, 1920 x 1280; 24 bit/pixel color and 24 Visible Levels, 65535 Gray Levels
Anode Voltage / Beam Divergence	100-180 kVA / Upward or downward and from side for dual view
Tube Current / Cooling / Duty Cycle	0.1-1.2 mA / Sealed oil bath with forced air / 100%
Storage / Operating Temperature / Humidity	-20° C to 70° C / 0% RH to 50% RH / Up to 95% non-condensing
Computer	Intel i5 processor on Windows OS.
Safety Certifications	AERB, ISO 9001:2015, ISO 14001, CE, IEC, Food & Film safety certified.

IMAGE PROCESSING & ADDITIONAL SOFTWARE FEATURES

Machine diagnostics	Start-up and continuous self-diagnostics and alerts to user to indicate faults
Tagging / Zoom	Automatically tracks baggage count, date, time, operator ID / Variable zoom up to 64 X, Sniper zoom, 9 quadrant zoom
Material discrimination	3 & 6 color imaging, greyscale imaging, pseudo color imaging, organic & inorganic imaging
Image storage / Image recall & archive	Store up to 200,000 images / All previous images recall possible
Additional features	4 secure levels of access, programmable keys, high/low penetration, variable edge enhancement, variable brightness and contrast, inverse or negative color imaging, HiSpot/super enhancement, one key shut down, network ready, threat detection alerts, TIP (Threat Image Projection).

OPTIONAL FEATURES & ACCESSORIES

- Dual monitor: One color and one black & white monitor
- Network Supervisory Workstation (NWS), Suspect Search Station (SSS)
- Combined Test Piece (CTP), in & out camera, Dust proof cover, Control desk
- UPS, Stabilizer, printer and I/O roller tables